

castlegolf

Your Adventure Starts Here!

THE CASTLE GOLF DIFFERENCE



IT'S NOT JUST THE GAME, IT'S THE EXPERIENCE

Castle Golf has built more premiere miniature golf courses than any other company in the world. We design courses that create memorable customer experiences, with fun and challenging golf holes, imaginative scenic elements, and integrated special effects like sounds, smoke and lighting.

GREAT EXPERIENCES BRING REPEAT BUSINESS

We know that customers who have a wonderful time will come back, so every Castle Golf course is designed to ensure players want to return -- again and again.

- Balls go where they're putted
- Excellent play-through reduces bottleneck areas and improves traffic flow
- Holes designed so players of all ages can have fun
- Add optional scenery elements and special effects to enhance the entertainment value and profits

QUALITY = VALUE

High-end courses can produce higher profits -- both from the superior player experience and from the enduring quality of the course. Whatever your budget, when you choose Castle Golf, you'll get outstanding quality at an excellent value from a proven industry leader.

BEYOND THE GRAND OPENING

Our courses are safe, easy to maintain and built to last -- year after year.

- Details like poured-in-place reinforced Perma-Curb edging and attractive landscape barriers reduce maintenance and wear
- Skilled design and construction helps prevent accidents before they happen with features such as sturdy bollard poles and rope barriers around water, built-in-place bridges, and proper lighting

SOLID ROI

Every course we build is designed to provide an unforgettable experience for your guests and make the most of your investment. Our dedication to customer service extends well beyond the completion of your course -- and we have a long list of satisfied customers to prove it!

TALK TO US

If you're looking for the very best product and profits, Castle Golf is the right choice for you. Call us at **800-688-4542** or visit www.castlegolf.com to start your adventure today.

"The experience working with Castle Golf has exceeded all my expectations. Not only did they do what they said they would do, they gave me guidance and help every step of the way."

– Frank Prete, Brewster, MA

"...We were completely awed by it. You have done the most fantastic job! There are no complaints, merely praises. It is just fantastic."

*– Eddie Dantzig,
United Kingdom*



Your Adventure Starts Here!

THE RIGHT CHOICE



EXPERIENCE MATTERS

For nearly 50 years we've built more profitable, state-of-the-art miniature golf courses and family fun centers than any other company in the world. Our team has constructed hundreds of top-quality outdoor and indoor courses throughout the United States, the United Kingdom, Mexico, Taiwan, Japan, Canada and the Caribbean. Whatever your vision, our knowledge, experience and careful attention to detail ensures a product you can be proud of for years to come.

PLAN FOR SUCCESS

We will help evaluate your needs, identify key objectives, help you set a realistic budget, and create a project plan that meets your goals. Our complete construction drawings provide all the details for building your course -- from electrical to bridges, to plumbing and grading, as well as specific features for each hole.

CREATIVITY COUNTS

We can design projects that create magical experiences and bring repeat business -- both indoors and out. In addition to innovative miniature golf courses, we can add elements that increase fun and profit:

- Batting cages, bumper-boat ponds, go-kart tracks and plaza areas
- Theme elements and features such as boulders, waterfalls and fountains
- Detailed props, sounds, interactive animations and special effects
- State-of-the-art indoor courses that feature new techniques and materials and make the most of small spaces

QUALITY THAT ENDURES

While imaginative design will entice players, the quality of play is a vital element that keeps them coming back. We design and build your course to ensure balls roll true -- right where players aim. Every themed item is built to last, and our steel-reinforced Perma-Curbs provide a smooth, durable surface for even the most skilled player.

MORE GREEN IN YOUR POCKET

We know how critical your bottom line is, and we're proud of our track record of implementing inventive, detailed designs that yield ongoing return on your investment. We maximize your available space -- whether it's inside or outside; by the acre or by the square foot -- with strong visual appeal, playability and a challenging environment that encourages repeat play. We also incorporate elements that help reduce maintenance costs and traffic damage, ensuring more of every dollar goes to profit.

NO SURPRISES

We build what we design -- no surprises. Our designers, artisans and fabricators are master craftspeople with proven experience in every aspect of design and fabrication. We'll make regular onsite visits to participate in and review the progress of your project. This also means living up to our promises -- meeting deadlines, staying within the budget, providing outstanding craftsmanship and responding to your needs to ensure you get the very best results.

Ready to start your adventure? Here's why Castle Golf is the right choice for you:

Your Adventure Starts Here!



OUTSTANDING SERVICE

Our onsite managers have extensive experience and are firmly invested in the successful completion of your project. From the moment you begin the design process until your grand opening, we stay in contact to ensure you get a great result. And our commitment to customer service continues even after your project is completed.

GREAT WORD-OF-MOUTH

Our best advertising comes from our long list of satisfied clients. But don't just take our word for it:

"We absolutely LOVE the course!" - Mark and Gwen Thornberg, Matterhorn Village, OR

"...The professionals at Castle Golf were with us from the beginning to the end... Thank you for making us stand out from the competition, and for your patience and professionalism."

- Bob and Charlene Conway, Fairhaven, MA

"Castle Golf has been what they claimed to be and more. ...Each stage of construction was done exactly as it was described – no surprises – and it turned out better than we imagined." - Mary Birch, Cooperstown, NY

We maintain ongoing relationships with our customers and can connect you with them to exchange marketing ideas, discuss course design concepts or find out more about the business.

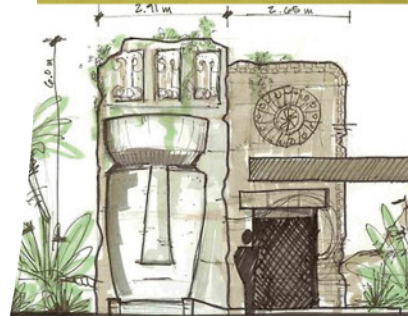
Talk to Us

Call Castle Golf at:

800-688-4542

Or visit www.castlegolf.com

to start your
adventure.



GETTING STARTED



WORK THAT FEELS MORE LIKE PLAY

Miniature golf courses and family fun centers are fun and satisfying businesses to own and operate, and can provide an excellent working environment.

AND PROFITABLE, TOO!

A well-built course can often pay for itself within the first few years and tends to stay profitable over the long term. Even during a slower economy there's always a market for affordable family entertainment options close to home.

Here are some tips to help get you started:

Gather information. Industry trade shows and professional associations can be great resources for prospective owners, offering seminars, beginner workshops and newsletters. Websites and trade publications can also provide useful information about specific attractions and profit centers.

Study your market. Starting a family entertainment business requires knowing your market, choosing the right location, and setting a realistic budget. Other considerations - such as competitors, course size and scale, ease of maintenance, playability, and minimizing liability and risk - will also impact your decision.

Learn the industry. Talk to other owners in a non-competing area to get insights into the business, learn about their successes and challenges, and how they operate. Visit other centers to determine your course likes and dislikes, observe and talk to customers, and *be* a customer.

Choose a theme. An imaginative, well-chosen theme creates memorable player experiences and can help build a strong brand identity - and your bottom line. Quality themes that can be adapted over time are always a good investment. Your theme can reflect the heritage of your location or transport players to an entirely new environment with special effects that add impact and engage the senses. Your theme should suit your market and your budget, and continue to feel fresh even after many years of successful play.

Pick the right partner. To ensure you start - and stay - profitable, your course and facility must be thoughtfully planned, skillfully designed and meticulously constructed. With nearly 40 years of experience creating premiere indoor and outdoor miniature golf courses and family fun centers, the Castle Golf team can help guide you through every step of the process.

Talk to Us

Call Castle Golf at:

800-688-4542

Or visit www.castlegolf.com

to start your adventure.



Your Adventure Starts Here!



AS A TEAM

The Castle Golf design and build process is highly collaborative. Whether your budget includes a high-end family fun center loaded with attractions, or a well-designed miniature golf course for a smaller market, we can help you find the right solution for your needs.

OUR 6-STEP DESIGN AND BUILD PROCESS:

1. Information Exchange. Tell us what you want; we'll tell you how we can help. We'll provide you with useful information, discuss your overall project goals, and answer your initial questions.

2. Retainer/Design. Depending on the size and complexity of your project, this phase typically takes from four to eight weeks and may include a site visit.

Research. We'll help you identify your customers, choose a theme and appearance, determine hole characteristics, and establish a realistic budget.

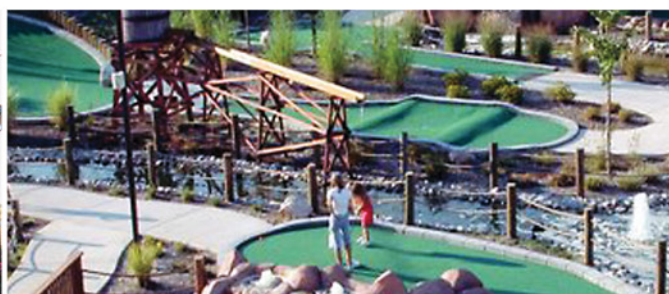
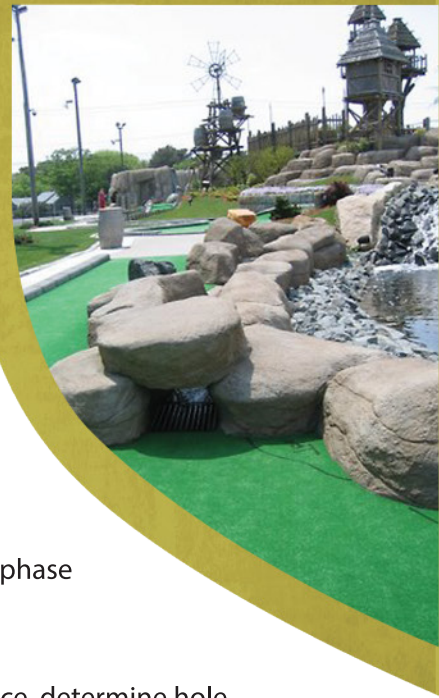
Design. Using your site plans, we'll develop an initial layout and design for your review, and then incorporate any revisions as needed.

Final layout. Once the design is determined, we'll create a final AutoCAD design layout and a proposed project cost.

3. Construction Contract. Next we'll prepare a construction contract based on your design plan.

4. Construction Phase. A standard 18-hole course typically takes about eight weeks to complete, weather permitting. More construction time is required if adding additional revenue centers - bumper-boat lagoons, a batting cage system, or a go kart track - thematic elements and/or special effects. Other site structures such as sales and arcade/party buildings, or parking areas can be constructed to be built at the same time.

Since Castle Golf project managers have proven experience and unsurpassed attention to detail, we provide our own team for most of your project to ensure you get the best results.



Your Adventure Starts Here!



5. Final Walk-through. Your course is completed and play begins! We'll give you a full set of technical drawings and a comprehensive *Manual on Maintaining Your Course* to help you run your business.

6. Ongoing Support. The Castle Golf team is committed to your long-term success. We offer up to a two-year written warranty on construction and materials, and strive to remain accessible well after your course is complete. We'll provide you with a marketing manual and consultation to help you get started, and offer ongoing telephone support. In addition, we can introduce you to other successful owner/operators who are willing to share their experiences and ideas.

READY TO START YOUR ADVENTURE?

Call Castle Golf at **800-688-4542** or visit www.castlegolf.com.



GET THE MOST FOR YOUR MONEY



A variety of factors can affect the overall cost of building your miniature golf course. Our Castle Golf team of experts can help you select the right design for your market and make the most of your resources.

HERE'S A GUIDE TO SOME COMMON COST VARIABLES:

Water Features. Typically, the larger the water feature, the higher the cost -- not only due to the concrete and materials needed, but also the labor and pump size required. We'll help you select water features that complement your design -- and your budget.

Lighting. A properly lighted course is essential, and we can help you find creative ways to reduce your lighting costs. For example, supplementing overhead lighting on 15-foot poles and low-level bollard lighting with spotlights on key features can be an attractive, cost-effective way to set a mood while also providing adequate light for play.

Elevation. Changes in elevation can add interest to your course, and can also impact your costs. Since adding playing levels typically requires retaining walls, the higher the elevation, the higher the cost. ADA accessibility guidelines, such as wheelchair ramps, can also affect elevation changes. We can consult with you on these guidelines and design a layout that adds interest and suits your needs.

Rockscape. The cost of any natural or artificial rock used in your design is affected by the quality, size and amount used. Since it is typically priced by the square foot, as the surface area increases, so does the cost. Large cave structures may also require interior structural walls to provide safety and strength and should be included in the budget.

Landscape. Plant material and groundcover costs can vary widely depending on the maturity of the plants and the materials used. We will work with you and your local landscaper to help you determine the best landscaping choices for your situation.

Theme. Although themed elements generally increase the cost of your course, a well-executed theme can also significantly increase your revenue, help make your course memorable, and promote your brand identity. We'll help you choose a theme that is exciting, classic, and can be adapted over time.



Your Adventure Starts Here!

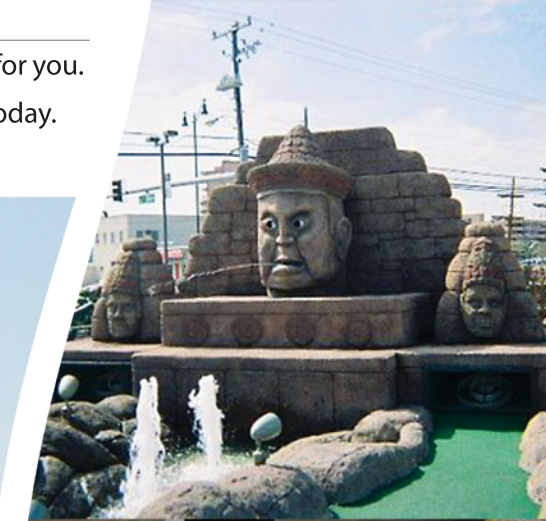


Safety Features. Although not standard with all builders, we specify high-quality safety features -- sturdy bollard poles and rope barriers surrounding water elements, built-in-place bridges and railings, and proper lighting -- as standard on every course we design. We don't compromise when it comes to safety.

Space Planning. A typical outdoor 18-hole miniature golf course uses about 18,000 to 25,000 square feet and the costs to fill that space can quickly add up. A well-planned Castle Golf design can significantly reduce your costs by using your available surface area in the most efficient way possible, and can even include creative ways to develop extra space as an additional revenue source. We also have extensive experience building highly successful indoor courses designed to make the most of small spaces.

TALK TO US

If you're looking for the best product and profits, Castle Golf is the right choice for you. Call us at **800-688-4542** or visit **www.castlegolf.com** to start your adventure today.





What if you are in a smaller market or have a limited budget but still want Castle Golf quality, playability, durability and custom design? Our Help-U-Build Program may be just the right solution.

Whether you need a little help or a lot, Help-U-Build makes the most of your money by allowing you to complete certain portions of your project with your own labor and resources.



A LA CARTE

We'll work with you to create your design, develop a full set of construction documents, and calculate the total costs for completing your project. We'll then help determine possible ways to stretch your budget, such as using an overhead lighting system with floodlights, or adding your own theme structures.

WHAT WE DO

Certain elements are critical to the long-term playing characteristics of your course - such as concrete and steel permanent structures - and will typically require Castle Golf expertise. These include:

- Designing, forming and shaping the fairways and greens
- Earth shaping as dictated by your topography and site plan
- Constructing integral water features -- waterfalls, ponds, rivers and fountains

WHAT YOU CAN DO

The portions of your design that are not structural can be completed by you or a skilled contractor, then added to or revised as your time and budget allow. These include:

- Electrical
- Irrigation
- Landscape and water features
- Themed elements
- Lighting
- Lodging
- Fencing
- Retaining walls
- Carpet installation
- Site Preparation

COST

Your final costs will vary depending on the overall design and what resources you can contribute to the project, but can be significantly lower than a full-service project. We can also provide supplier contacts and help you get the best prices for carpet and equipment.

TALK TO US

To find out more about how you can save with our Help-U-Build program, call Castle Golf at **800-688-4542** or visit **www.castlegolf.com** to start your adventure.

Your Adventure Starts Here!



www.castlegolf.com

office (480) 968-1955 *toll free* (800) 688-4542 *fax* (480) 968-1915



*Building the finest in
miniature golf courses and family fun.*